



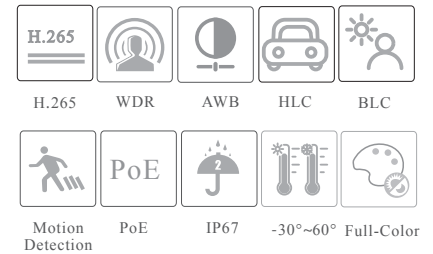
# XB42C-GEN3

4MP Full-Color Bullet Network Camera

NDAA Compliant 



- H.265/H.264/MJPEG coding
- Max. resolution: 2560 × 1440
- 20~ 30m white light view distance
- 24/7 full color imaging
- 3D DNR, HWDR, HLC and BLC
- ROI coding
- Built-in micro SD card slot, up to 256GB
- DC12V/PoE power supply
- IP67 ingress protection
- Support three streams
- Support mobile surveillance by smart phones with iOS and Android OS
- Intelligent Analytics



## El Paso, Tx.

1630 E. Paisano Dr.  
Zip. 79901, U.S.A.  
Phone: (915) 533 - 5119

## Miami (Doral), FL.

8301 NW 27th St. #1.  
Zip. 33122, U.S.A.  
Phone: (305) 889 - 1127

## San Antonio, Tx.

5715 Kenwick St.  
Zip. 78238, U.S.A.  
Phone: (915) 533 5119

E-mail: [sales@epcom.net](mailto:sales@epcom.net)

Website: <https://www.epcom.net>



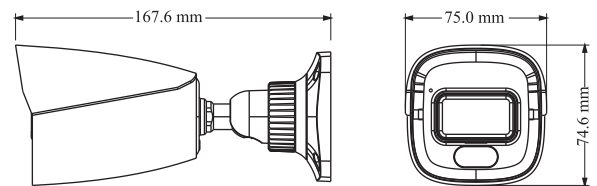
## SPECIFICATIONS

Specifications	Model	XB42C-GEN3	
<b>Camera</b>			
Image Sensor	1 / 3 "CMOS		
Image Size	2560 × 1440		
Electronic Shutter	1 / 1 s ~ 1 / 100000 s		
Iris Type	Fixed Iris		
Min. Illumination	0.003 lux@ F1.0, AGC ON; 0 lux with LED ON		
S/N Ratio	≥50dB		
Lens	2.8 mm @F1.0, H.FoV: 99°; V.FoV:53°; D.FoV:116° 3.6 mm @F1.0, H.FoV: 79°; V.FoV:44°; D.FoV:93°		
Focus	Fixed		
Lens Mount	M12		
Wide Dynamic Range	120dB		
BLC	Yes		
HLC	Yes		
Defog	No		
Digital NR	3D DNR		
Angle Adjustment	Pan: 0°~360°; Tilt: 0°~80°; Rotation: 0°~360°		
<b>Image</b>			
Video Compression	Main stream: H.265 / H.264 Sub stream: H.265 /H.264 / MJPEG Third stream: H.265 / H.264 / MJPEG		
H.264 Compression Standard	Baseline Profile/Main Profile/High Profile		
Resolution	4MP (2560×1440), 3MP (2304×1296), 1080P (1920 × 1080), 720P (1280 × 720), D1, VGA (640 × 480), CIF, 480 × 240		
Main Stream	60Hz:4MP/3MP/1080P/720P(1~30fps); 50Hz:4MP/3MP/1080P/720P(1~25fps)		
Sub Stream	60Hz : 720P/D1/VGA/CIF(1~30fps); 50Hz: 720P/D1/VGA/CIF (1~25fps)		
Third Stream	60Hz : D1/CIF/480×240 (1~30fps); 50Hz: D1/CIF/480×240 (1~25fps)		
Bit Rate	128 Kbps ~ 8 Mbps		
Bit Rate Type	VBR / CBR		
Audio Compression	G711A / U		
Image Settings	ROI, Saturation, Brightness, Hue, Contrast, Wide Dynamic, Sharpness, Image Flip, Image Mirror, NR, etc. adjustable through client software or web browser		
ROI	Each ROI to be configured separately		
<b>Interfaces</b>			
Network	RJ 45		
Video Output	NO		
Audio	1CH audio input; 1CH built-in MIC		
Storage	Built-in micro SD card slot, up to 256GB		
Reset	Yes		
<b>Functions</b>			
Remote Monitoring	Web Browser/NVMS2.0/NVR/mobile APP		
Web Browser	IE11(plug-in required)/Chrome 89.0+/Edge 89.0+/Firefox 87.0+/Safari 14.0+		
Online Connection	Support simultaneous monitoring for up to 3 users; Support multi-stream real time transmission		
Network Protocol	UDP, IPv4, IPv6, DHCP, NTP, RTSP, RTP, RTCP, SNMP, PPPoE, DDNS, 802.1x, SMTP, FTP, UPnP, HTTPs, HTTP, QoS		
Interface Protocol	ONVIF		
Storage	Network remote storage; micro SD card storage		
Intelligent Analytics	Video exception detection, intrusion detection, line crossing detection and abandoned / missing object detection		
Smart Alarm	Motion detection, SD card error, SD card full		
General function	Watermark, video mask, heartbeat, corridor pattern		
Security	Video encryption, firmware encryption, HTTPs encryption, configuration encryption, illegal login lock IP address filtering, 802.1x authentication, basic and digest authentication for HTTP/HTTPs		
PoE	Yes (IEEE802.3af)		
White Light Range	20 ~ 30 m		
Ingress Protection	IP 67		

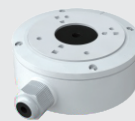
## DORI Distance

Lens	Detect	Observe	Recognize	Identify
2.8mm	57.76m(189.50ft)	23.11m(75.82ft)	11.55m(37.89ft)	5.78m(18.96ft)
3.6mm	71.28m(233.85ft)	28.51m(93.53ft)	14.26m(46.78ft)	7.13m(23.39ft)
<b>Others</b>				
Power Supply	DC12V/PoE			
Power Consumption	< 5.5W			
Storage Conditions	- 30 °C ~ 65 °C (-22°F~149°F), Humidity: less than 95 % ( non- condensing)			
Operating Conditions	- 30 °C ~ 60 °C (-22°F~140°F), Humidity: less than 95 % ( non- condensing)			
Dimensions ( mm )	167.6 × 75 × 74.6			
Weight ( net )	Approx. 0.38KG			
Installation	Ceiling mounting; wall mounting			
Certificate	CE, FCC			
Environmental Protection	Complies with Directive EU RoHS, WEEE(2012/19/EU), directive 94/62/EC and REACH(EC1907/2006)			

## DIMENSIONS



## AVAILABLE ACCESSORIES



E-JBOX-U