

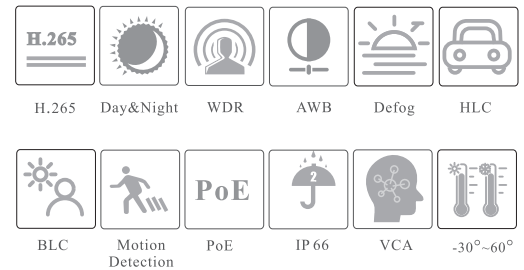


# XE82T-GEN3

8MP Dual Illumination AI Turret  
Network Camera  
NDAA Compliant 



- H.265+/H265/H.264+/H264/ MJPEG coding
- Max. resolution: 3840 × 2160
- 30 ~ 40m IR or white light range
- 3D DNR, true WDR, HLC, BLC, Defog and ROI coding
- 1CH audio input; 1CH audio output
- 1CH built-in speaker; 1CH built-in microphone
- Built-in micro SD card slot, up to 256GB
- DC12V/PoE power supply
- IP66 ingress protection
- Support three streams
- Support remote monitoring by smart phones & tablet PCs with iOS and Android OS
- Intelligent analytics
- Blue and red light warning (flashing alternately)
- Support user-defined warning voice import



## El Paso, Tx.

1630 E. Paisano Dr.  
Zip. 79901, U.S.A.  
Phone: (915) 533 - 5119

## Miami (Doral), FL.

8301 NW 27th St. #1.  
Zip. 33122, U.S.A.  
Phone: (305) 889 - 1127

## San Antonio, Tx.

5715 Kenwick St.  
Zip. 78238, U.S.A.  
Phone: (915) 533 5119

E-mail: [sales@epcom.net](mailto:sales@epcom.net)

Website: <https://www.epcom.net>

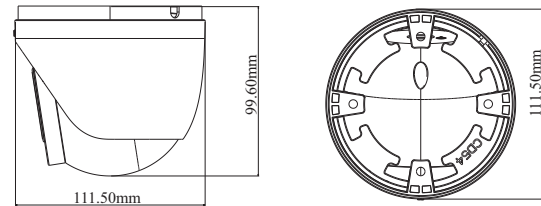


## SPECIFICATIONS

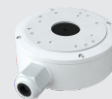
Specifications	Model	XE82T-GEN3
<b>Camera</b>		
Image Sensor	1 / 1.8" CMOS	
Image Size	3840 × 2160	
Electronic Shutter	1 / 2s ~ 1 / 100000 s	
Iris Type	Fixed Iris	
Min. Illumination	0.008lux@F1.6, AGC ON, 0 lux with IR, 0 lux with LED	
Lens	2.8 mm@F1.6, H.FoV:109°; V.FoV:57°; D.FoV:132°; 3.6 mm@F1.6, H.FoV: 88°; V.FoV:51°; D.FoV:100°	
Focus	Fixed	
Lens Mount	M12	
Wide Dynamic Range	120dB	
BLC	Yes	
HLC	Yes	
Defog	Yes	
Digital NR	2D/3D DNR	
S/N Ratio	≥50dB	
Angle Adjustment	Pan: 0°~360°; Tilt:0°~75°; Rotation: 0°~360°	
<b>Image</b>		
Video Compression	Main stream: H.265+ / H.265 / H.264+ / H.264 Sub/Third stream: H.265+ / H.265 / H.264+ / H.264 / MJPEG	
H.264 Compression Standard	Baseline Profile/Main Profile/High Profile	
Resolution	8MP(3840×2160), 6MP(3072×2048), 5MP(2592×1944), 4MP(2592×1520), 2K(2560×1440), 3MP(2304×1296), 1080P(1920×1080), 720P(1280×720), D1, VGA(640×480), CIF, 480 × 240	
Main Stream	8MP/6MP/5MP/4MP/2K/3MP/1080P/720P (60Hz: 1~30fps; 50Hz: 1~25fps)	
Sub Stream	1080P/720P/D1/VGA/CIF (60Hz: 1~30fps; 50Hz: 1~25fps)	
Third Stream	D1/VGA/CIF/480×240 (60Hz: 1~30fps; 50Hz: 1~25fps)	
Bit Rate	64 Kbps ~ 12 Mbps	
Bit Rate Type	VBR / CBR	
Audio Compression	G711A / U	
Image Settings	ROI, Saturation, Brightness, Hue, Contrast, Wide Dynamic, Sharpness, Image Flip, Image Mirror, NR, etc. adjustable through client software or web browser	
ROI	Each ROI to be configured separately	
<b>Interfaces</b>		
Network	RJ 45 10M/100M self-adaptive Ethernet port	
Video Output	No	
Audio	1CH audio input; 1CH audio output; 1CH built-in speaker; 1CH built-in microphone	
Alarm	1CH alarm input; 1CH alarm output	
Storage	Built-in micro SD card slot; up to 256GB	
Reset	Yes	
<b>Functions</b>		
Remote Monitoring	Web Client/ NVR/NVMS2.0/Mobile APP	
Web Browser	IE11 (plug-in required)/Chrome 89.0+/Edge 89.0+/Firefox 87.0+/Safari 14.0+	
Online Connection	Support simultaneous monitoring for up to 10 users; Support multi-stream real time transmission	
Network Protocol	UDP, IPv4, IPv6, DHCP, NTP, RTSP, RTP, RTCP, PPPoE, DDNS, SMTP, FTP, SNMP, RTMP, HTTP, 802.1x, UPnP, HTTPS, HTTP POST, QoS	
Interface Protocol	ONVIF	
Storage	Network remote storage; micro SD card storage	
Smart Alarm	Motion detection, sensor alarm, SD card error, SD card full, IP address conflict, Cable connection	
General Function	Watermark, IP address filtering, video mask, heartbeat, password protection, image distortion correction	
Security	Video encryption, firmware encryption, HTTPS encryption, configuration encryption, illegal login lock, IP address filtering, 802.1x authentication, basic and digest authentication for HTTP/HTTPS	
PoE	Yes, IEEE802.3af	
Supplement light Range	IR range: 30 ~ 40 m White light range: 30 ~ 40 m	
Protection Grade	IP66	

Intelligent Analytics				
Video Abnormality	Scene change detection, video blur detection, abnormal color detection			
Perimeter Detection	Line crossing detection (human/vehicle classification); Region intrusion/entrance/exiting detection (human/vehicle classification)			
Sound&Light Warning	Yes			
Other Events	Face detection and face capture, abandoned/missing object detection; heat map; target counting by line/area, heat map			
<b>DORI Distance</b>				
Lens	Detect	Observe	Recognize	Identify
2.8mm	80m(262ft)	32m(105ft)	16m(52ft)	8m(26ft)
3.6mm	91m(299ft)	36m(118ft)	18m(59ft)	9m(30ft)
<b>Others</b>				
Power Supply	DC12V/PoE			
Power Consumption	< 12.5W			
Storage Conditions	- 30 °C ~ 65 °C (-22°F~149°F), Humidity: less than 95 % (non-condensing)			
Operating Conditions	- 30 °C ~ 60 °C (-22°F~140°F), Humidity: less than 95 % (non-condensing)			
Dimensions ( mm )	Ø111.5 × 99.6			
Weight ( net )	Approx. 0.64KG			
Installation	Ceiling mounting; wall mounting			
Certificate	CE, FCC			
Environmental Protection	Complies with Directive EU RoHS, WEEE(2012/19/EU), directive 94/62/EC and REACH(EC1907/2006)			

## DIMENSIONS



## AVAILABLE ACCESSORIES



E-JBOX-U2